

ENE IC INST UCTI NS      INSTALLATI N  
MILLENNIUM AT ILLE S      AT ILLE SWIT  
AN S      WE S      NC NC ETE L      S



## KONTI/AKEMI/CIOSO/KIATO BATH FILLERS & BATH FILLERS WITH HAND SHOWER

### Important Information

- Hot and cold water inlet pressures should be equal.
- Operating static pressure is 500kpa.
- Lines must be flushed out prior to installation of the mixer. Damage caused to the mixer by debris flowing through the pipework is not covered under warranty.
- Maximum hot water temperature is 80C.

### Cleaning Instructions

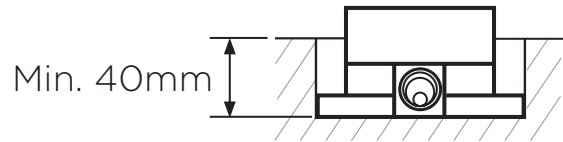
1. Under no circumstances should tapware be installed using acetone silicone
2. Never clean Mixers/Tapware/Showers/Accessories using harsh detergents/cleaning products, citrus based cleaning products or abrasive cleaning pastes.
3. Where your tapware remains dry in use, a soft 100% cotton cloth can be used to remove dust
4. Alternatively, wipe over with a soft 100% cotton cloth using tepid water with a small amount of liquid soap added (2% liquid soap maximum). Using a different cotton cloth thoroughly rinse off all soap mix using cold water. To finish wipe off all residual water with another dry cotton cloth



# INSTALLATION

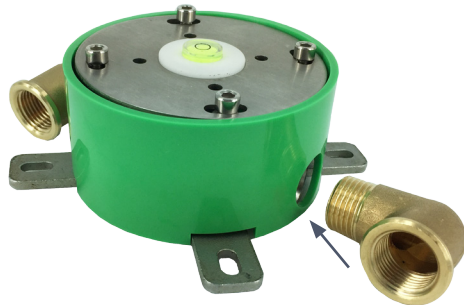
## IMPORTANT INFORMATION

Recessed measurements - Minimum 40mm with finished floor.



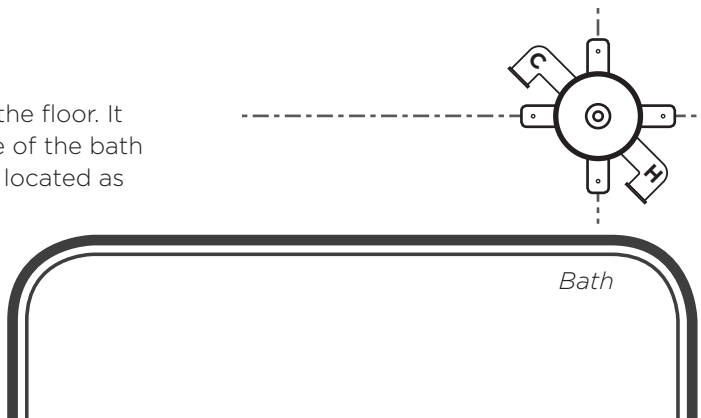
### Step 1

Connect the inlet elbow (installer supplied) to the concealed floor mount.



### Step 2

Locate the floor mount on the floor. It must be square to the edge of the bath with the water inlet elbows located as per the diagram.

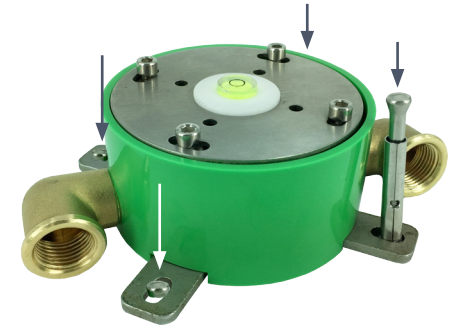


### Step 3

Secure the floor mounts to the floor, ensuring the mount is square and level to finished floor (refer to levelling bubble on top plate). Tighten.

### Important!

Please ensure pressure test has been conducted before moving onto Step 4.



### Step 4

Using the allen key provided, remove the levelling panel from the floor mount and pop out level.

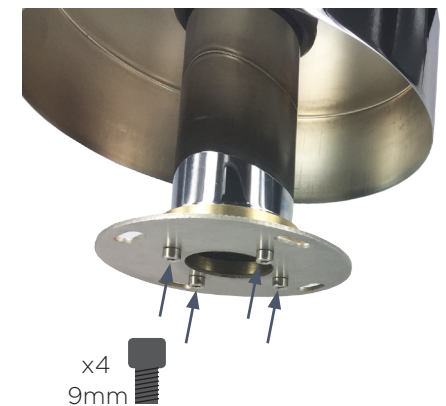
Ensure you put the screws in a safe place to re-secure plate later.



### Step 5

Slide flange onto the bottom of the mixer column.

Secure the levelling plate to underside of mixer column with screws provided.

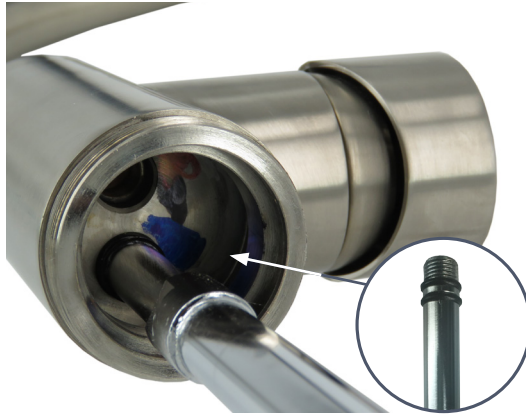


# INSTALLATION

## Step 6

Screw both water pipes into the body of the mixer, ensuring that the correct pipe is connected to the correct inlet hole (cold pipe & inlet is marked).

Make sure the o-ring is a tight fit and is not damaged. If damaged, replace the o-ring with spares provided.



## Step 9

Secure the mixer to the floor mount using the screws that were removed earlier. Tighten.



## Step 7

Screw the mixer body to the mixer column, carefully feeding the water pipes through the bottom.



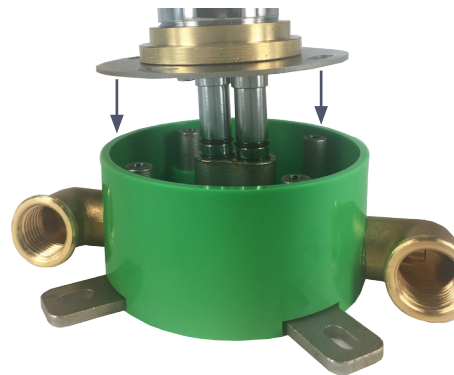
## Step 10

Slide cover flange over floor mount to conceal.



## Step 8

Remove pressure test plugs from outlet holes and push the long water pipes into to the floor mount. Twist the entire mixer until the holes of the levelling plate line up with the holes in the floor mount.



### Important!

Ensure hot and cold water tubes are inserted into the correct sides.